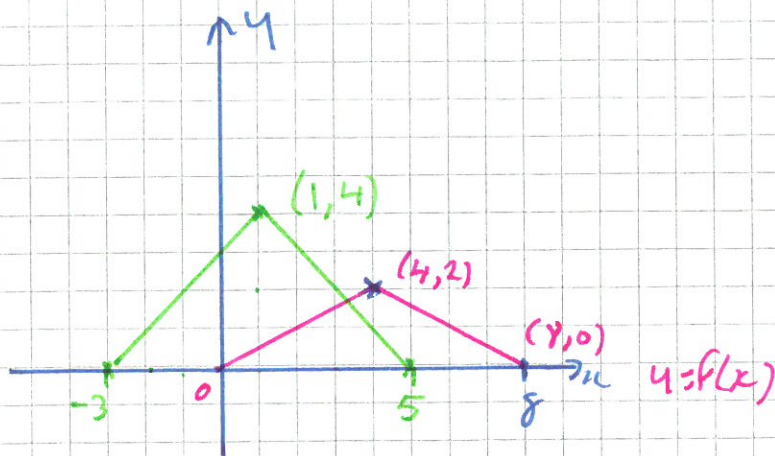


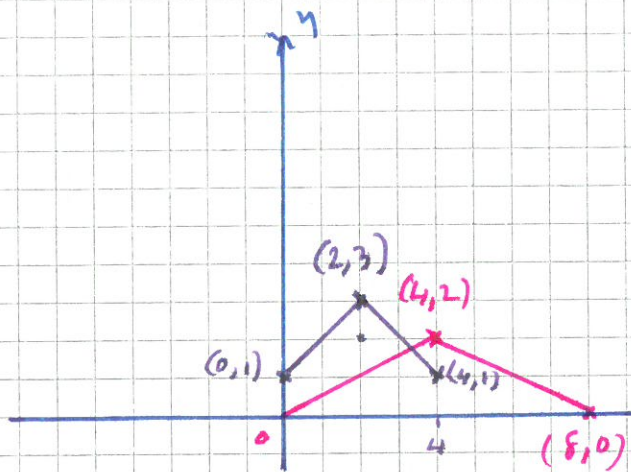
C3 - Transformations PPT's

① (a)



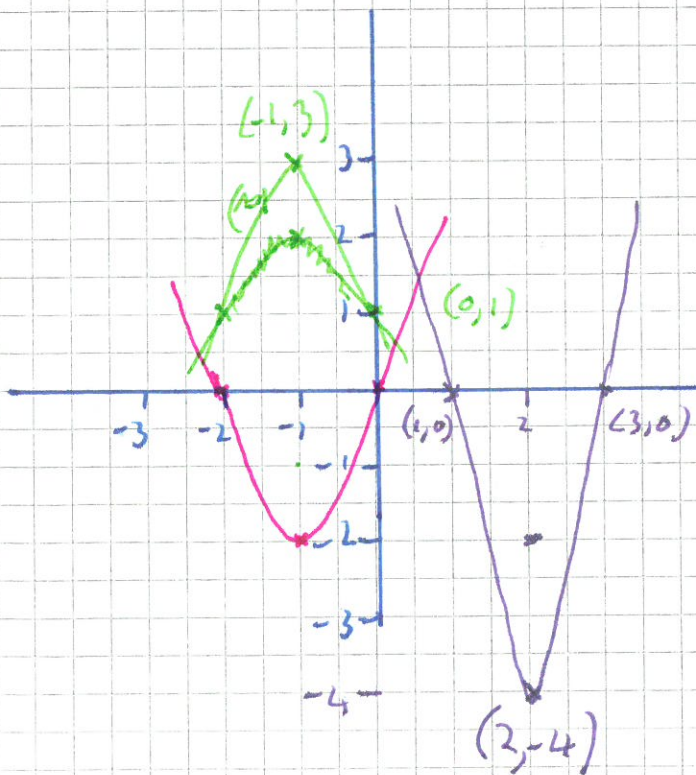
$y = 2f(x+3)$
 shape moves three units to left
 then y coords doubled

(b)

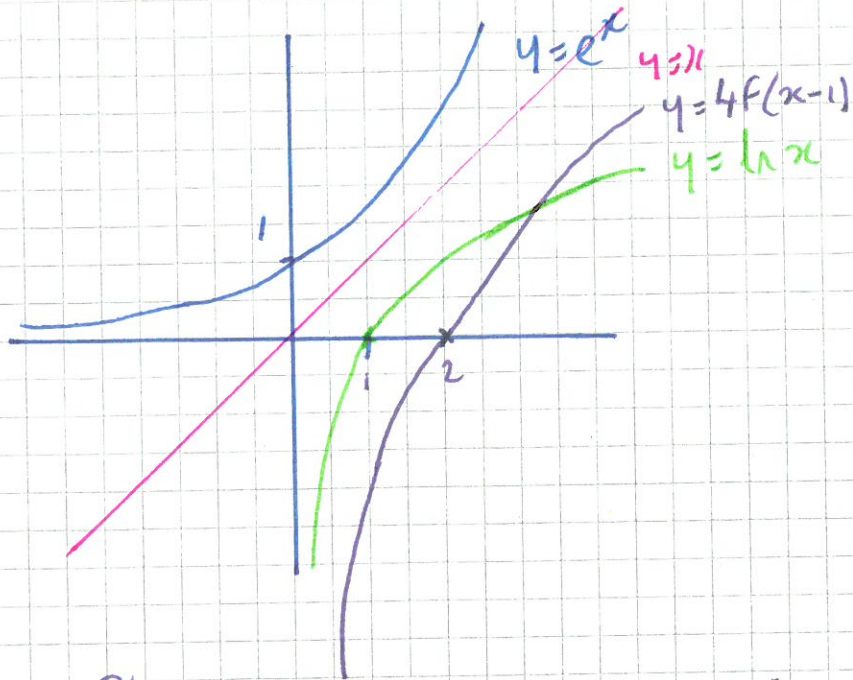


$y = f(2x) + 1$
 half the x coord position,
 add 1 to y coord position

②

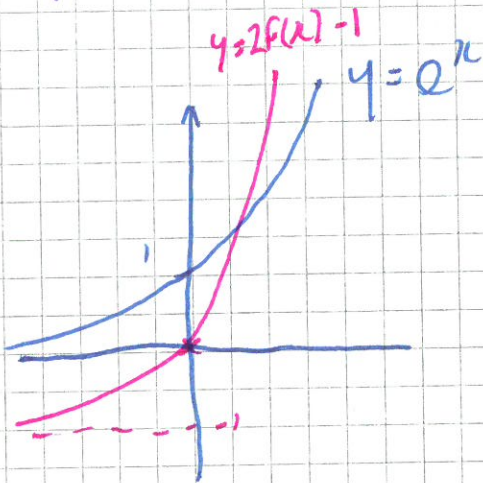


3



So $f(x)$, as $x \rightarrow \infty$ $y \rightarrow \infty$
 $4f(x-1)$

4



5

