



Question 3 continued

Leave
blank

Blank area for writing with horizontal lines.

Q3

(Total 7 marks)

7



Turn over



4.

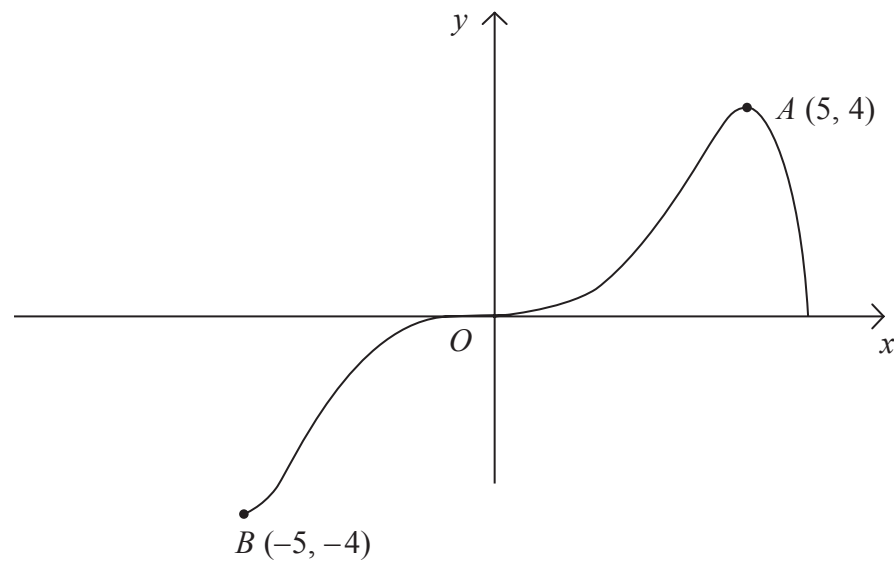


Figure 1

Figure 1 shows a sketch of the curve with equation $y = f(x)$.
The curve passes through the origin O and the points $A(5, 4)$ and $B(-5, -4)$.

In separate diagrams, sketch the graph with equation

(a) $y = |f(x)|$, (3)

(b) $y = f(|x|)$, (3)

(c) $y = 2f(x+1)$. (4)

On each sketch, show the coordinates of the points corresponding to A and B .



Question 4 continued

Leave
blank



Question 4 continued

Leave
blank



Question 4 continued

Leave
blank

(Total 10 marks)

Q4



11

Turn over

5. The radioactive decay of a substance is given by

$$R = 1000e^{-ct}, \quad t \geq 0.$$

where R is the number of atoms at time t years and c is a positive constant.

(a) Find the number of atoms when the substance started to decay. **(1)**

It takes 5730 years for half of the substance to decay.

(b) Find the value of c to 3 significant figures. **(4)**

(c) Calculate the number of atoms that will be left when $t = 22\,920$. **(2)**

(d) In the space provided on page 13, sketch the graph of R against t . **(2)**



Question 5 continued

Leave
blank

Q5

(Total 9 marks)



Leave
blank

6. (a) Use the double angle formulae and the identity

$$\cos(A+B) \equiv \cos A \cos B - \sin A \sin B$$

to obtain an expression for $\cos 3x$ in terms of powers of $\cos x$ only.

(4)

- (b) (i) Prove that

$$\frac{\cos x}{1 + \sin x} + \frac{1 + \sin x}{\cos x} \equiv 2 \sec x, \quad x \neq (2n+1) \frac{\pi}{2}.$$

(4)

- (ii) Hence find, for $0 < x < 2\pi$, all the solutions of

$$\frac{\cos x}{1 + \sin x} + \frac{1 + \sin x}{\cos x} = 4.$$

(3)



Leave
blank

7. A curve C has equation

$$y = 3 \sin 2x + 4 \cos 2x, \quad -\pi \leq x \leq \pi.$$

The point $A(0, 4)$ lies on C .

(a) Find an equation of the normal to the curve C at A .

(5)

(b) Express y in the form $R \sin(2x + \alpha)$, where $R > 0$ and $0 < \alpha < \frac{\pi}{2}$.

Give the value of α to 3 significant figures.

(4)

(c) Find the coordinates of the points of intersection of the curve C with the x -axis.
Give your answers to 2 decimal places.

(4)



8. The functions f and g are defined by

$$f : x \mapsto 1 - 2x^3, \quad x \in \mathbb{R}$$

$$g : x \mapsto \frac{3}{x} - 4, \quad x > 0, \quad x \in \mathbb{R}$$

(a) Find the inverse function f^{-1} .

(2)

(b) Show that the composite function gf is

$$gf : x \mapsto \frac{8x^3 - 1}{1 - 2x^3}.$$

(4)

(c) Solve $gf(x) = 0$.

(2)

(d) Use calculus to find the coordinates of the stationary point on the graph of $y = gf(x)$.

(5)



